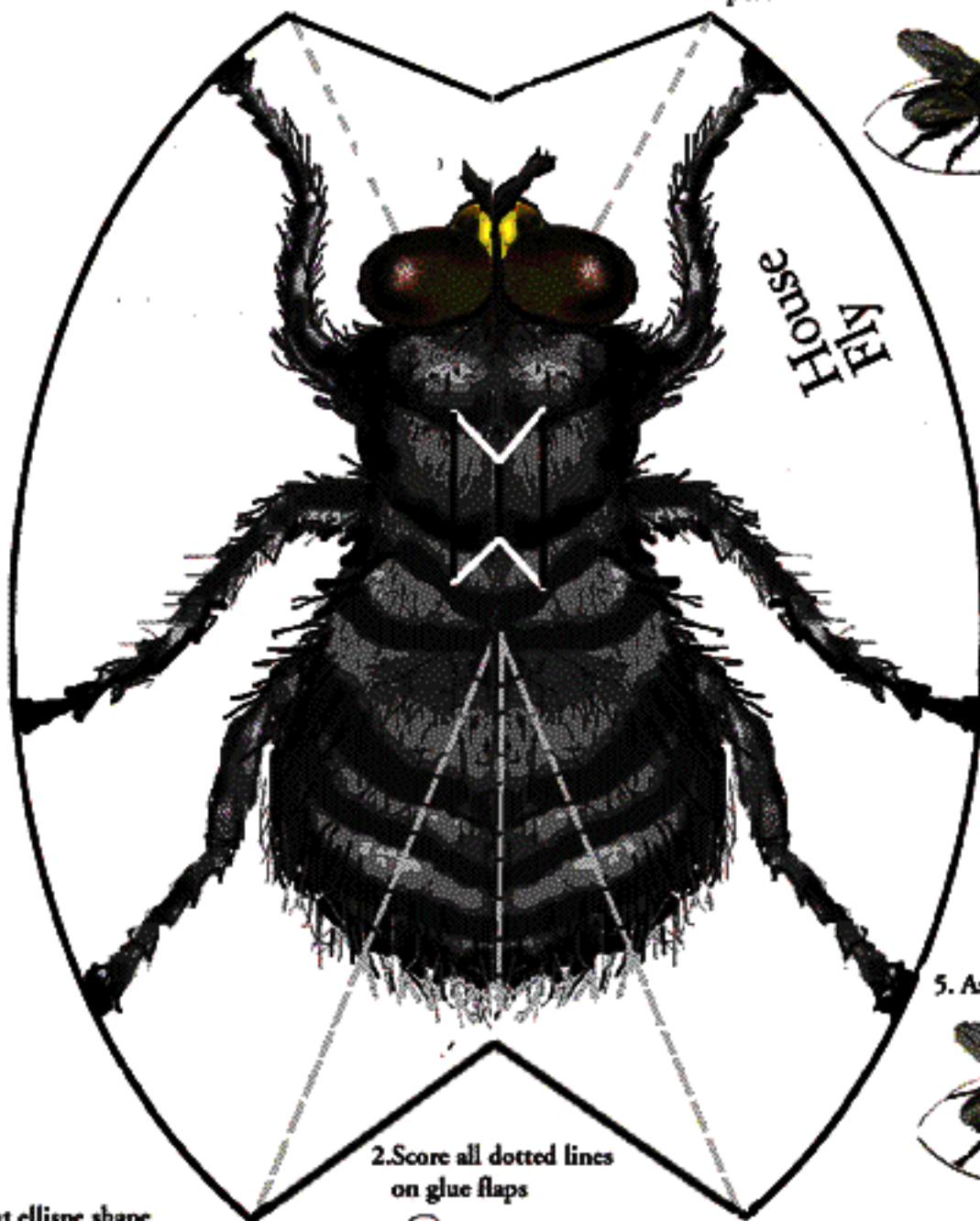




# House Fly

Muscid Family. Has slender proboscis and bites. Is a nuisance around the house. It's larva breeds in filth and decaying vegetation. It is a common pest.



5. Assembled view



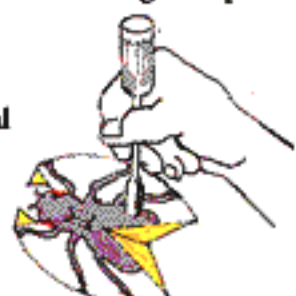
1. Cut out ellipse shape as shown.



**RED**  
Indicates other cutout lines to reveal insect form

**YELLOW**  
Indicates flaps to be glued together

2. Score all dotted lines on glue flaps



3. Fold in flaps and glue together



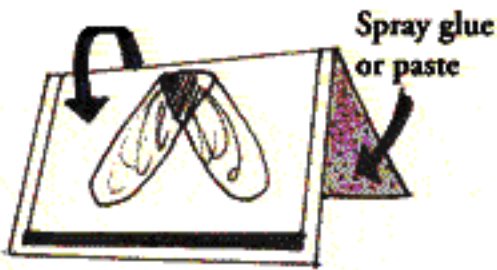
4. Insert wing into body as shown



Patent Pending

# House Fly

1. Fold sheet around and glue back to back



*Fold along line and glue both sides back to back*

2. Cut out marked side



Cut out this side



3. Insert wing into body



4. Insert wing between body tabs



Patent Pending